

V-Ray for MODO

Mac OS X

Overview

This guide is to serve as a reference for the installation of V-Ray for Modo.

In order to complete a full installation of V-Ray for Modo, you need to run the provided installer downloaded from [the Chaos Group website](#).

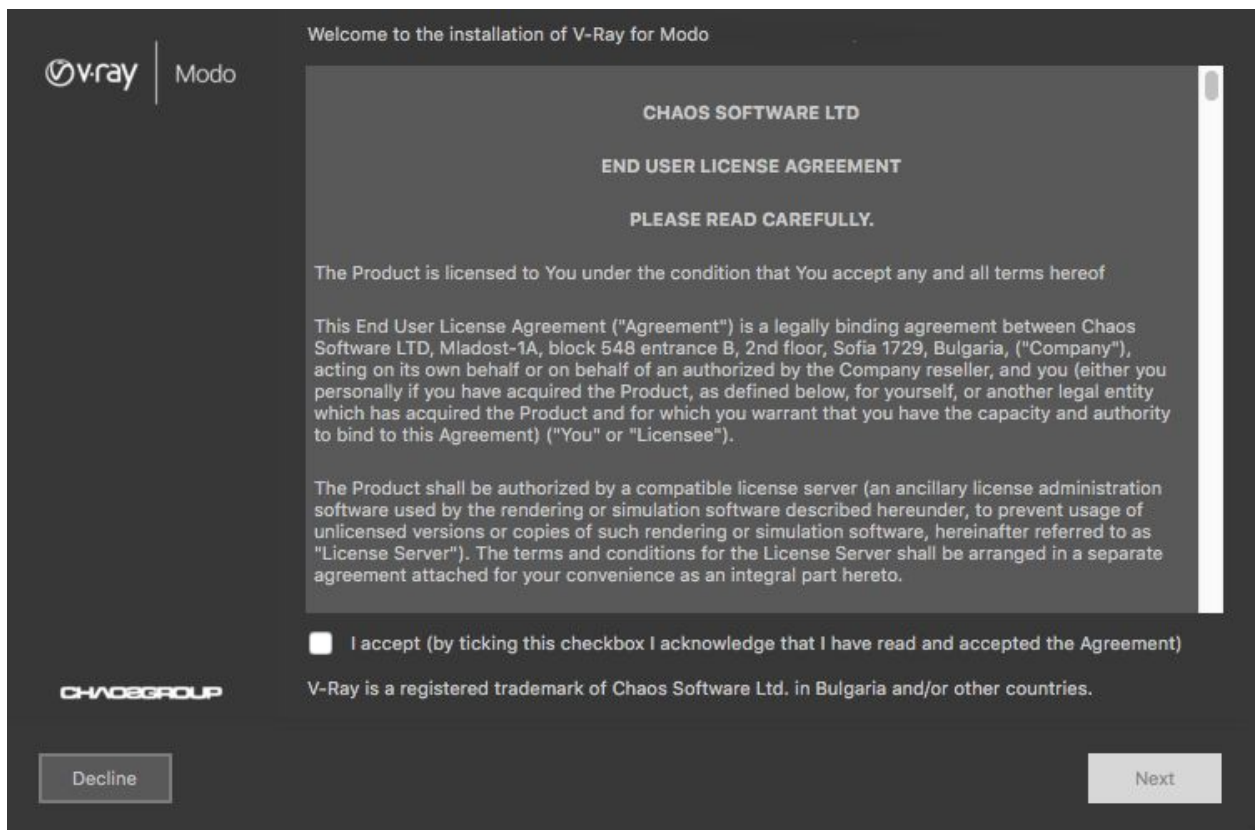
Installing V-Ray for Modo

This section describes the installation of V-Ray for Modo in detail.

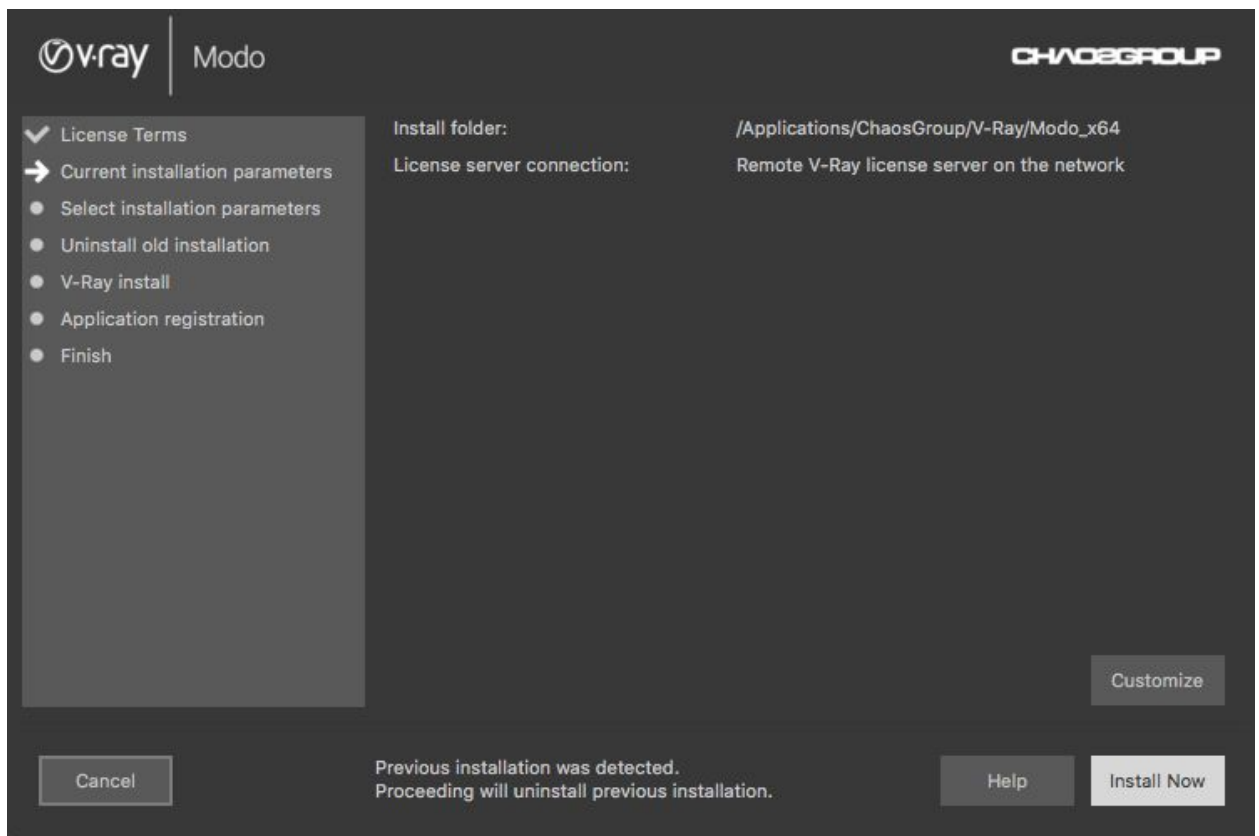
For Mac OS X

To complete the installation, follow these steps:

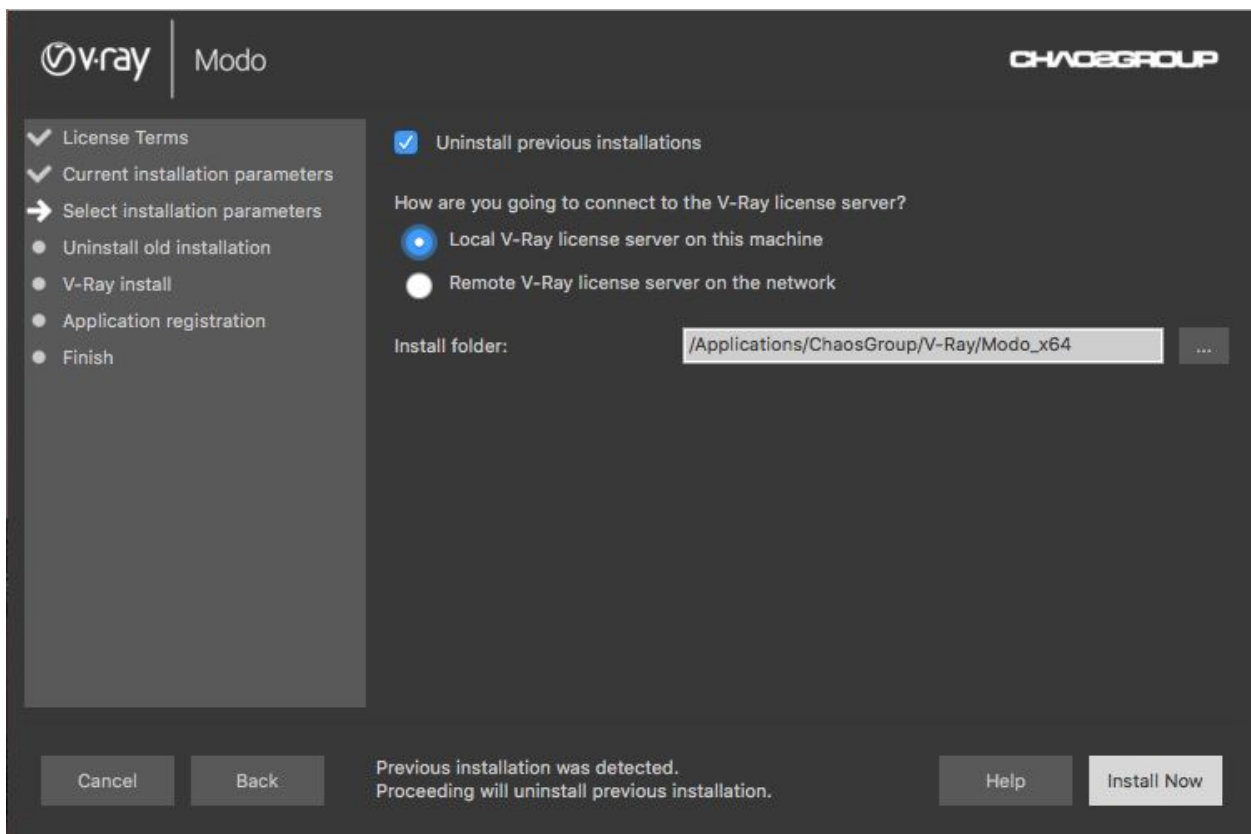
1. You are presented with the V-Ray licensing agreement. Please take a moment to review the agreement. Press the **I Agree** button to proceed:



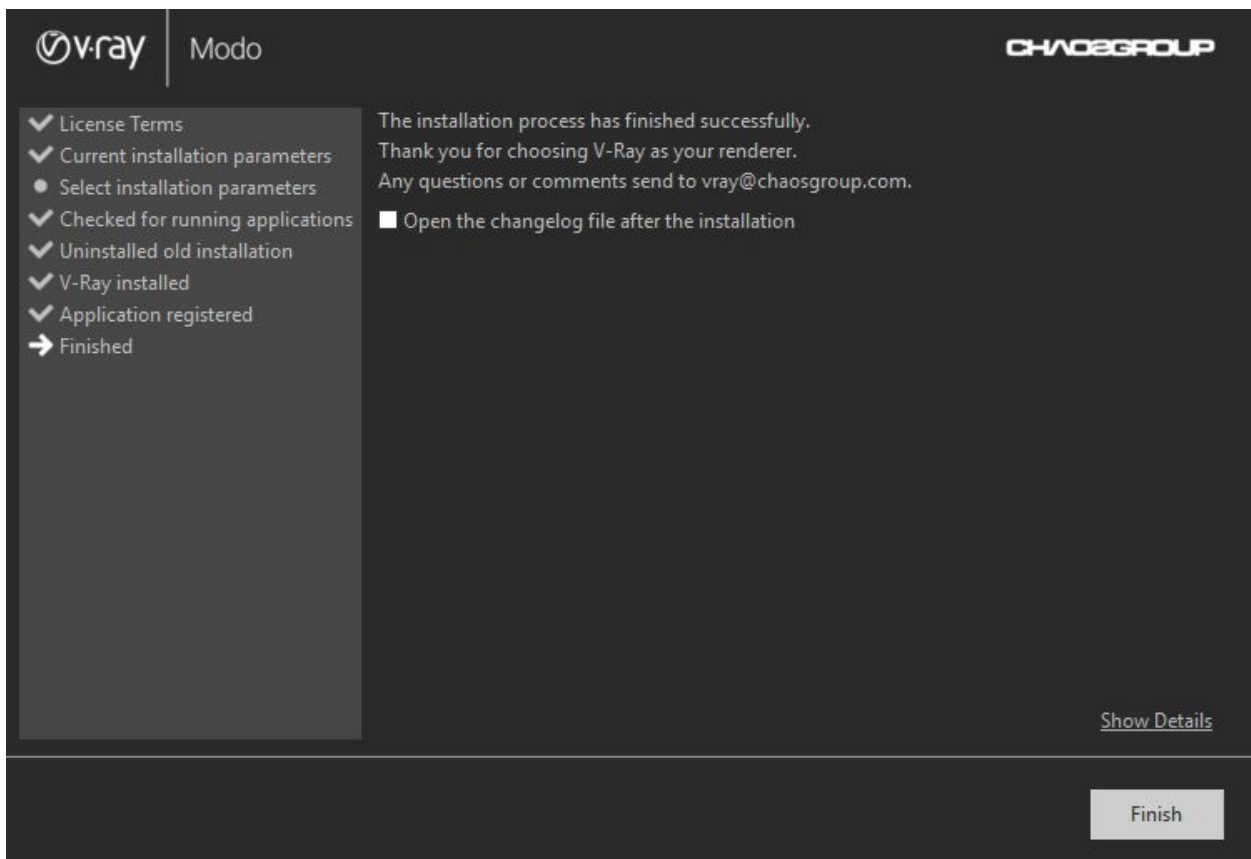
2. During the next step, you can press the **Customize** button and adjust the corresponding installation settings. The installer detects and lists any applications that need to be closed. Close them and press **Install Now**.



3. If you press the **Customize** button, you are able to adjust some installation settings:
 - a. **Uninstall previous installations** – Leave this checked to automatically uninstall any previous installations.
 - b. **How are you going to connect to the V-Ray license server** – Specifies whether the V-Ray license server will run locally or on another machine. If you select **Remote V-Ray license server on the network**, you are given fields to specify the IP address of the machine on which the V-Ray License server is running.
 - c. **Specify installation paths** – Ensure the default folders are correct.



4. The installer proceeds to uninstall any previous versions and install V-Ray.
5. If the installation is successful, you will get this screen:



6. Press the **Finish** button. For more information, see how to set [up your license](#).