

# Installation of V-Ray for SketchUp

## Windows

### Overview

---

This guide is to serve as a reference for installation of V-Ray for SketchUp. Please refer to the Glossary section for specific terms used in this document.

You can download the latest official version of V-Ray from <http://www.chaosgroup.com> with the account supplied to you by Chaos Group or your reseller.

A complete installation of V-Ray for SketchUp consists of:

- V-Ray
- V-Ray Online License Server
- V-Ray Swarm
- Chaos Cloud Client

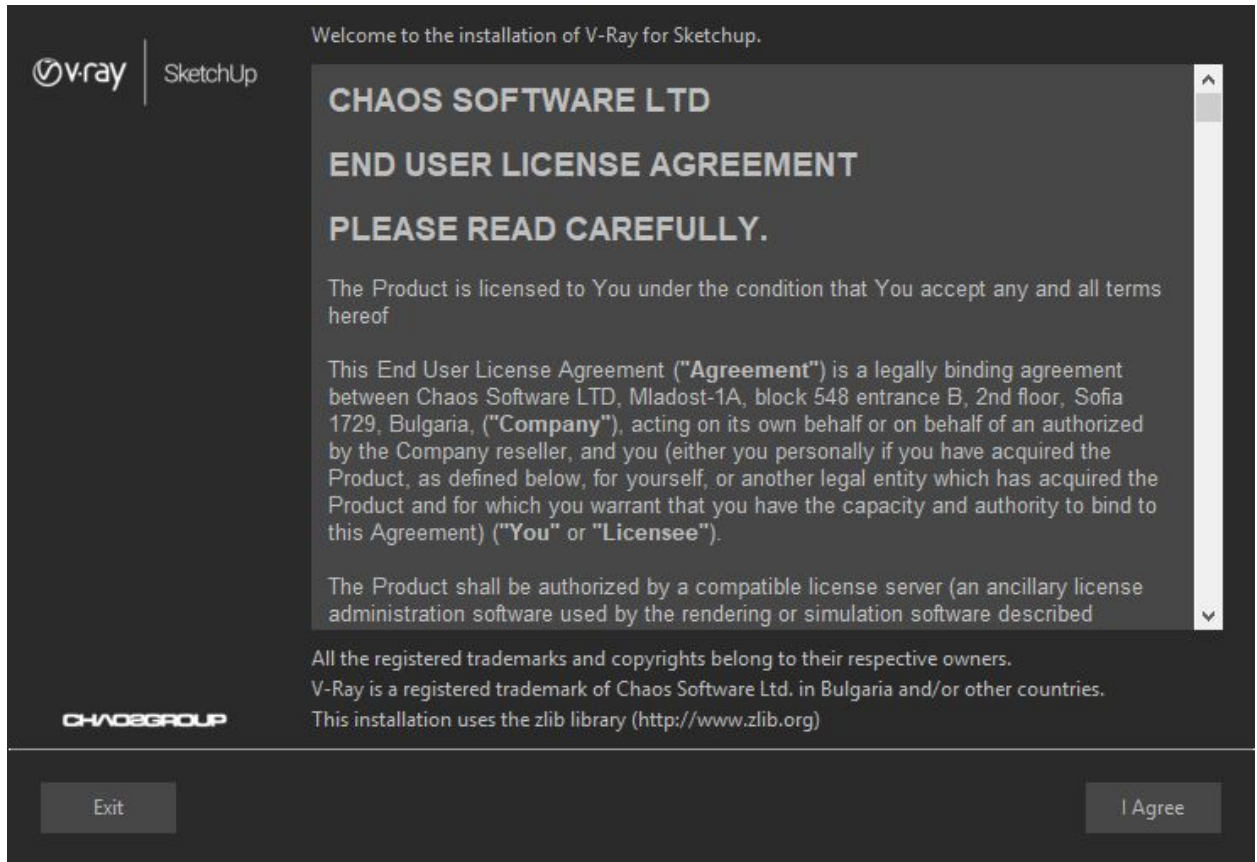
### Installation Steps

---

- Windows
- macOS

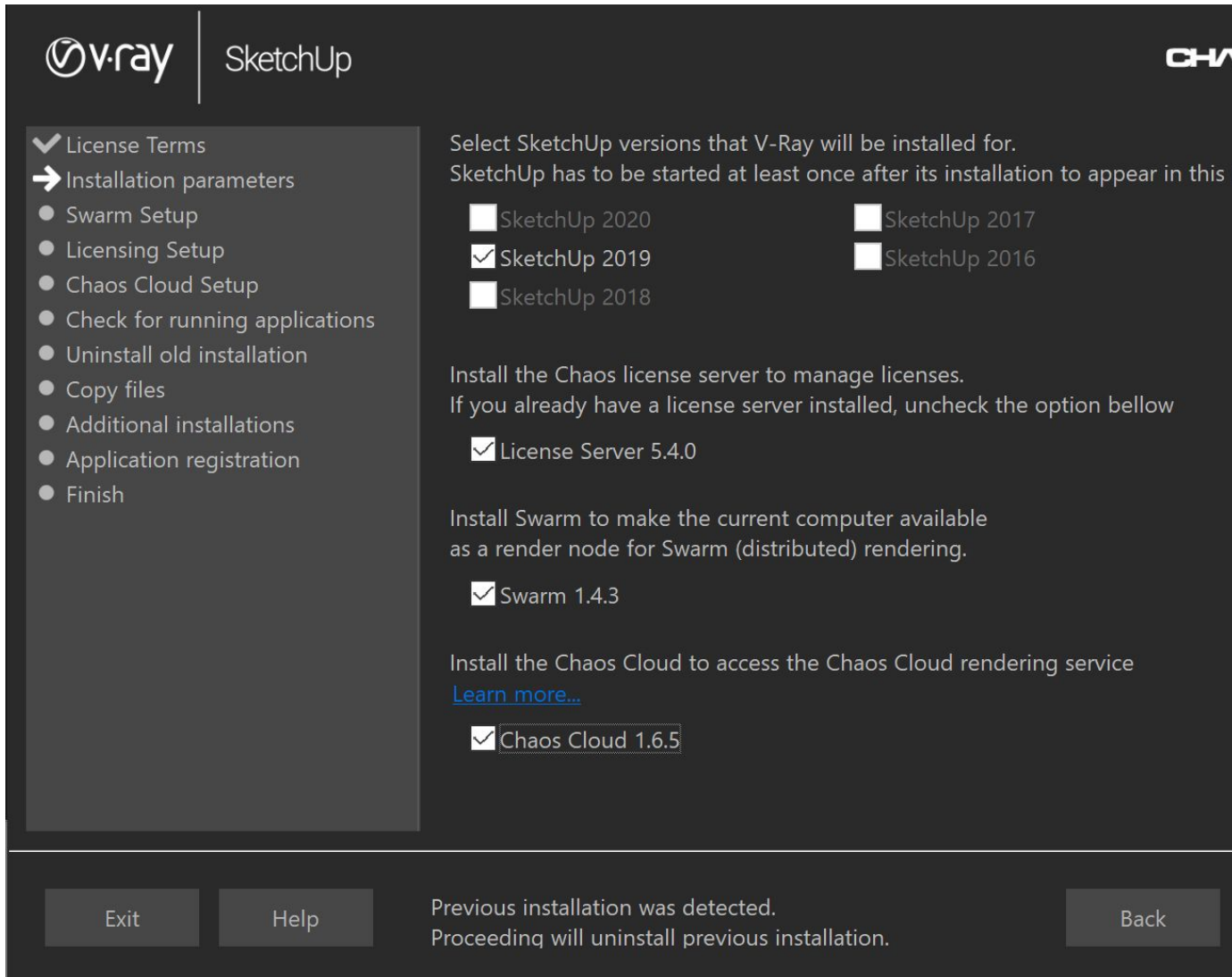
To install V-Ray make sure your Windows account has administrative privileges and double-click the installation file.

1. You will be presented with the [license agreement](#). Please take a moment to review it, Click **I Agree** to continue.

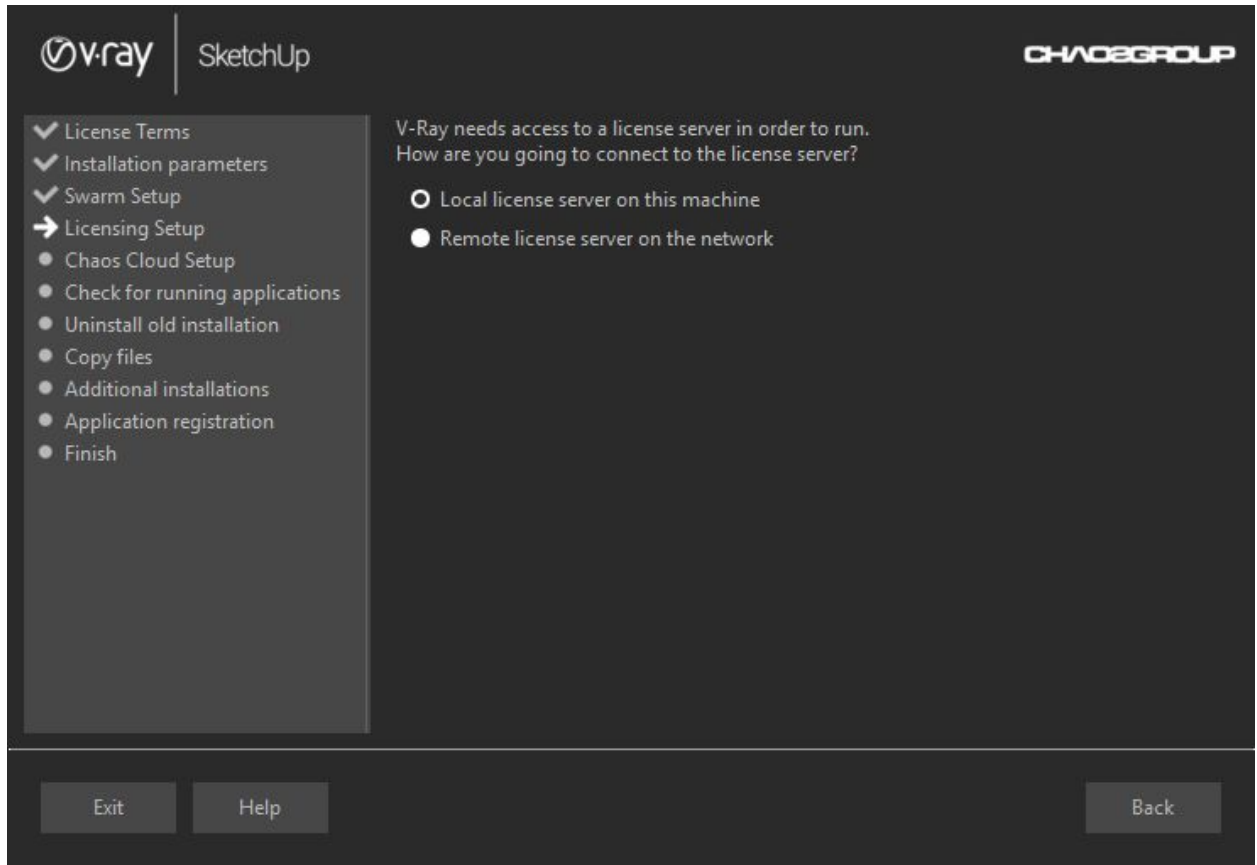


2. Next, you can select the installation type. The installer should detect the root folder automatically. Please make sure that the destination is correct. You can select more than one SketchUp version to proceed with the V-Ray installation. If a particular SketchUp version is installed but grayed out, make sure to run it at least once, and then restart the V-Ray installation process.

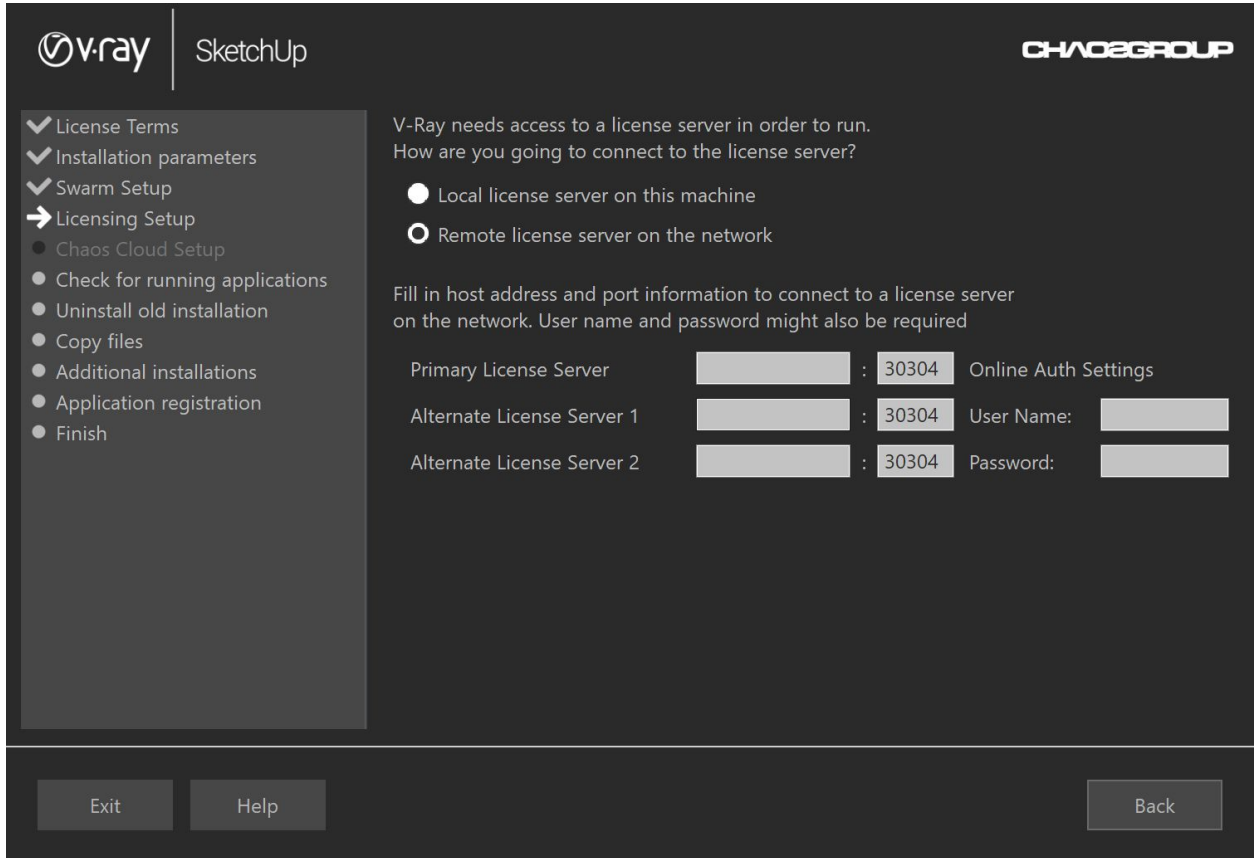
In this step you can opt to install the **License Server**, **V-Ray Swarm**, and **Chaos Cloud client**. You can configure them from the **Configure** buttons on the right.



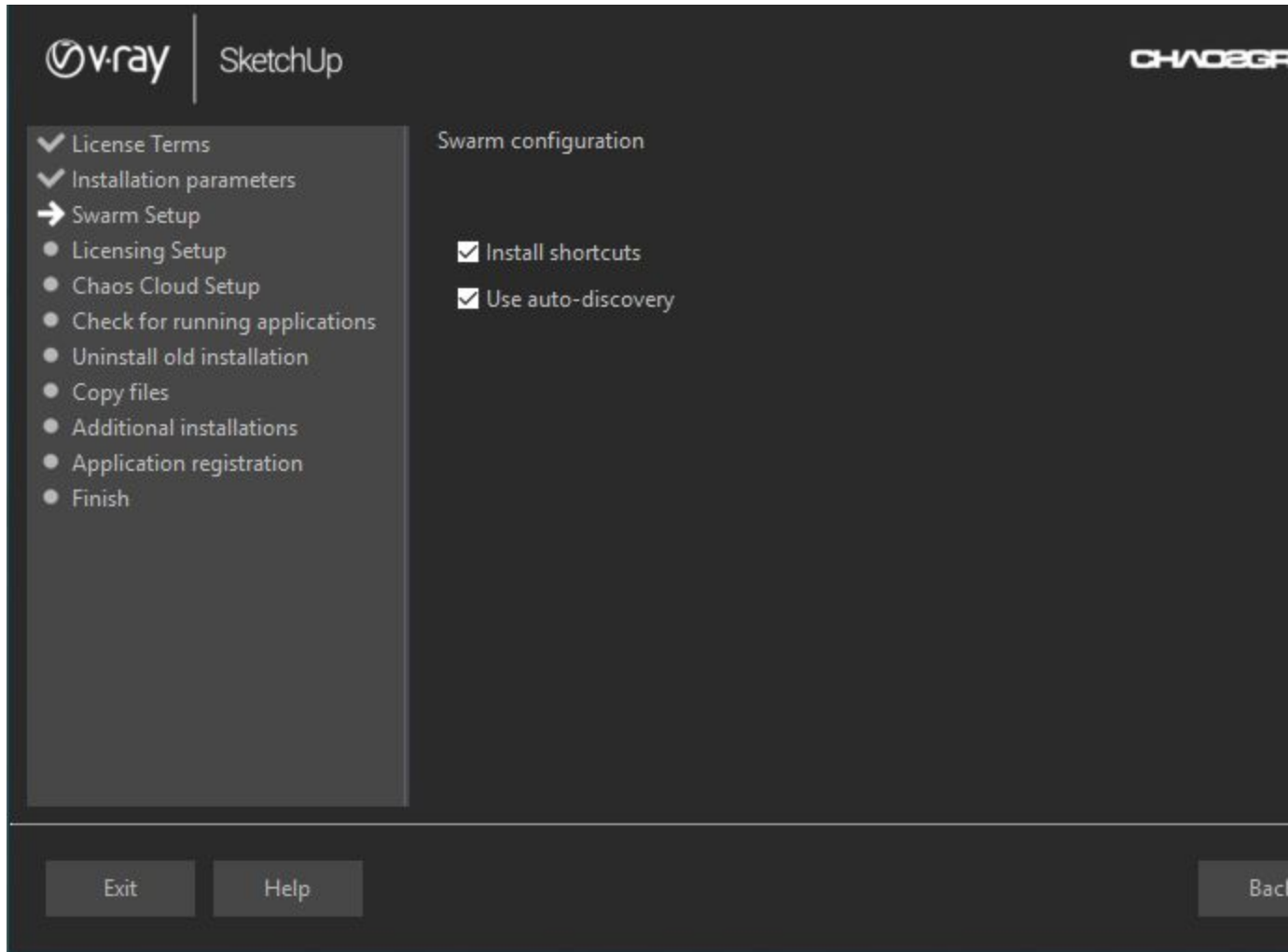
3. This step shows the installation process, if you decide to install and configure the [License Server](#). The connection to the V-Ray license server by default is **Local V-Ray license server on this machine**.



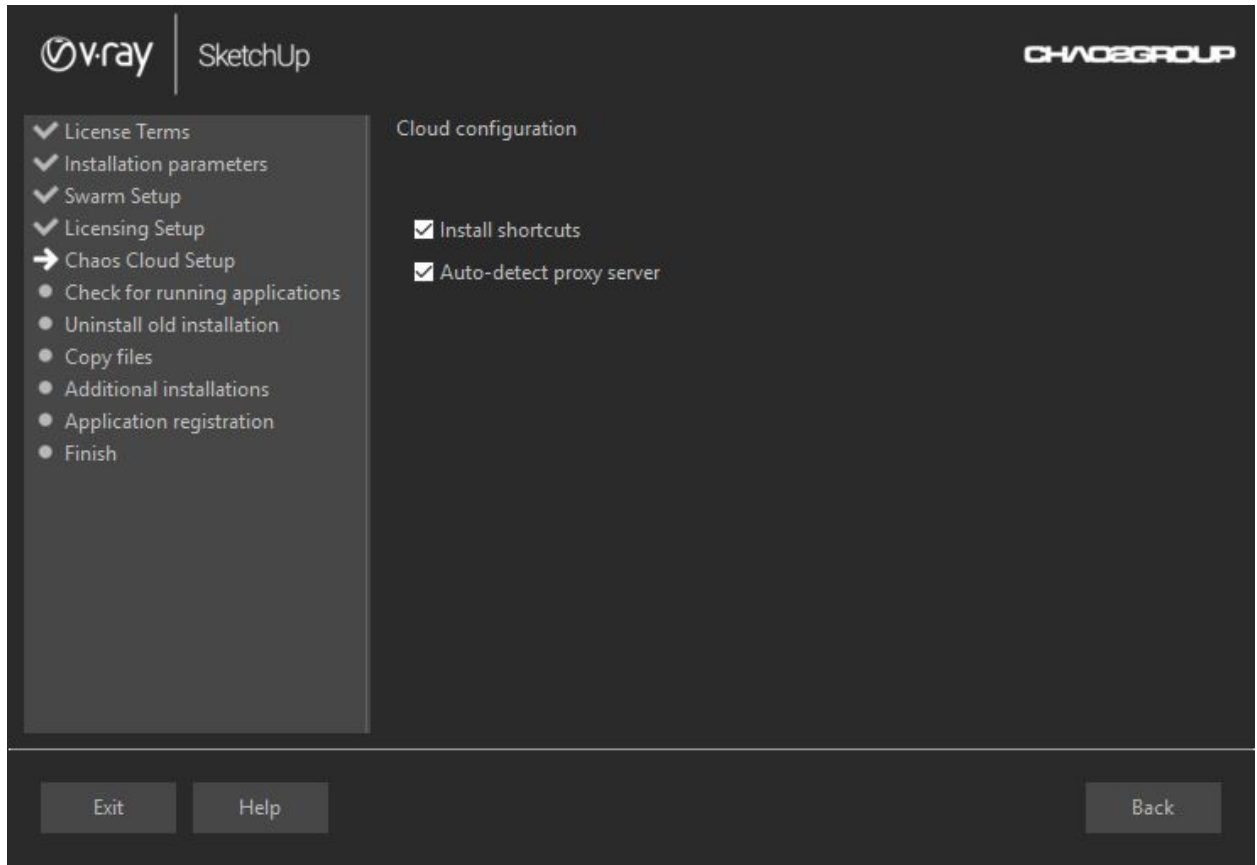
4. If you choose the **Remote V-Ray license server on the network** option, you will be prompted to fill in the host address and port information of the server of your choice. When ready, you can use the **Back** button to return to the previous window where you can configure the installation of **V-Ray Swarm** and **Chaos Cloud client**, or you can proceed with the installation and press **Install Now**.



5. This step shows the installation process, if you decide to install and configure V-Ray Swarm. When ready, press the **Back** button to return to the previous window where you can configure the installation of **Chaos Cloud client**, or proceed with the installation and press **Install Now**.



6. This step shows the installation process, if you decide to install and configure Chaos Cloud. When ready, press the **Back** button to return to the previous window and proceed with the installation process. For more information about the Chaos Cloud rendering service, see [Chaos Cloud documentation](#).



7. The installer will first check for running applications and will prompt you to stop them, if there are such. Then it will automatically uninstall all old versions.

8. Your installation is completed. On the last screen resides the usage statistics collection option. For more information on the [Chaos Group Telemetry](#), follow the link. Also, you can check the **Open the release notes file** option to open the release notes file after the installation.



SketchUp

CHAOSGROUP

- ✓ License Terms
- ✓ Installation parameters
- ✓ Swarm Setup
- ✓ Licensing Setup
- ✓ Chaos Cloud Setup
- ✓ Checked for running applications
- ✓ Uninstalled old installation
- ✓ Files copied
- ✓ Additional software installed
- ✓ Application registered
- Finished

The installation process has finished successfully.  
Thank you for choosing V-Ray as your renderer.  
Any questions or comments send to [support@chaosgroup.com](mailto:support@chaosgroup.com).

Help us improve V-Ray for SketchUp  
Participate in improving future versions of V-Ray by automatically sending anonymous usage statistics to Chaos Group.

- No personally identifiable information will be collected
- There are no additional e-mails regarding your participation
- You can change your mind at any time

[Learn more...](#)

Open the release notes file after the installation

[Show Details](#)

Finish